

CPD with a focus on multipliers

Multipliers are teachers offering continuous professional development (CPD) courses, as well as advice and support to other teachers.

In our multi-phase CPD courses for multipliers we collaborate to enhance teacher training in mathematics, especially with respect to:

- (Pedagogical) content knowledge;
- management and design of CPD courses;
- topic-specific, collaborative lesson design;
- teacher collaboration.



For further information please contact us or visit our website and social media networks:



info@dzlm.de



dzlm.de/en



facebook.com/dzlmathe

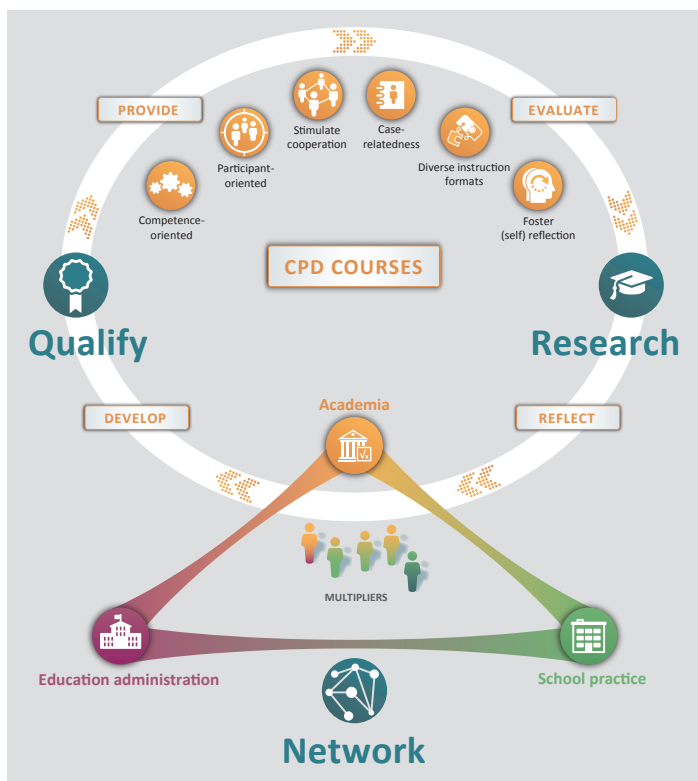


twitter.com/dzlmathe

An initiative of the

Deutsche
Telekom
Stiftung





The **German Centre for Mathematics Teacher Education (DZLM)** is Germany's first nationwide network for research-based continuous professional development (CPD).

Members of eight universities cooperate to professionalise mathematics CPD programmes – together with partners in education administration and school practice.

The DZLM's fields of action are:

- Topic-specific (mathematics) and practice-oriented;
- research-based, and seek to gain and share insights;
- networked throughout school levels.

The DZLM collaborates in several networks, e.g. the European STEM PD Centre Network.